

OTROS ESTUDIOS (17) Op. 264  
PARA MARIO JOSE  
de parte de su papá  
(D'APRÈS MONSIEUR CZERNY)

1/p

I

2/p

II

III

7/8

- 2 -

Handwritten musical score for the first system. The top staff is in treble clef with a 7/8 time signature. The bottom staff is in bass clef with a Roman numeral IV. The music consists of several measures with notes, rests, and accidentals.

Handwritten musical score for the second system. The top staff has a 'btr' annotation above it. The bottom staff has a 'f dim.' dynamic marking below it. The system concludes with a double bar line.

4/4 (D'APRÈS MONSIEUR HANON)

Handwritten musical score for the third system. The top staff is in treble clef with a 4/4 time signature. The bottom staff is in bass clef with a Roman numeral IV. The music features a sequence of chords and a melodic line.

Handwritten musical score for the fourth system. The top staff has a 'Tb' annotation above it. The bottom staff has various musical notations. The system concludes with a double bar line.

Handwritten musical notation for the first system. The treble clef staff contains a series of notes with stems pointing up, starting from a high register and moving downwards. A piano (*p*) dynamic marking is present. The bass clef staff contains a few notes, with a mezzo-forte (*m*) dynamic marking and a sharp sign ( $\sharp$ ) indicating the key signature.

Handwritten musical notation for the second system. The treble clef staff contains a series of notes with stems pointing up, starting from a high register and moving downwards. A piano (*p*) dynamic marking is present. The bass clef staff contains a series of notes with stems pointing up, starting from a high register and moving downwards. A pianissimo (*pp*) dynamic marking is present.

Handwritten musical notation for the third system. The treble clef staff contains a series of notes with stems pointing up, starting from a high register and moving downwards. A fortissimo decrescendo (*f dim.*) dynamic marking is present. The bass clef staff contains a few notes, with a mezzo-forte (*m*) dynamic marking and a sharp sign ( $\sharp$ ) indicating the key signature.

Handwritten musical notation for the fourth system. The treble clef staff contains a series of notes with stems pointing up, starting from a high register and moving downwards. A fortissimo (*f*) dynamic marking is present. The bass clef staff contains a series of notes with stems pointing up, starting from a high register and moving downwards. A piano (*p*) dynamic marking is present.

Handwritten musical notation for the first system. The top staff is in treble clef with a key signature of one flat (Bb) and a 4/4 time signature. It contains a melodic line of quarter notes with a slur over the first six notes. The bottom staff is in bass clef with a key signature of one flat (Bb) and contains a bass line. A dynamic marking 'p' is present in the first measure. A large number '4' is written at the end of the system.

Handwritten musical notation for the second system. The top staff is in treble clef with a key signature of one flat (Bb) and a 4/4 time signature. It contains a melodic line of eighth notes with a slur. The bottom staff is in bass clef with a key signature of one flat (Bb) and contains a bass line with chords. A dynamic marking 'p' is present in the first measure.

Handwritten musical notation for the third system. The top staff is in treble clef with a key signature of one flat (Bb) and contains a melodic line of eighth notes with a slur. The bottom staff is in bass clef with a key signature of one flat (Bb) and contains a bass line with chords. A dynamic marking 'p' is present in the first measure.

Handwritten musical notation for the fourth system. The top staff is in treble clef with a key signature of one flat (Bb) and contains a melodic line of eighth notes with a slur. The bottom staff is in bass clef with a key signature of one flat (Bb) and contains a bass line with chords. A dynamic marking 'p' is present in the first measure. A fish symbol is drawn in the middle of the system.



Handwritten musical notation for the first system. The top staff is in treble clef and the bottom staff is in bass clef. The music consists of several notes with accidentals (sharps and naturals) and slurs. A handwritten '5' is written above the top staff. The word 'dim' is written below the bottom staff.

Handwritten musical notation for the second system. The top staff is in bass clef and the bottom staff is in treble clef. The music continues with notes and accidentals, including slurs and a handwritten 'dim.' below the bottom staff.

Handwritten musical notation for the third system, showing piano accompaniment. The top staff is in treble clef and the bottom staff is in bass clef. It features vertical lines representing chords and various dynamics: *P*, *m*, *f*, and *pp*. The right side of the system contains dense, scribbled-out notes.

Handwritten musical notation for the fourth system. The top staff is in treble clef and the bottom staff is in bass clef. The word "Staccatto" is written above the top staff. The music consists of dotted notes with a dynamic marking of *f*. The word "etc." is written at the end of both staves. The phrase "poco a poco dim - - OLTO" is written below the bottom staff.

Handwritten musical notation for the first system. It consists of a treble clef staff and a bass clef staff. The treble staff contains notes with stems and beams, including a half note with a sharp sign. Dynamic markings include *pp*, *p*, *f*, and *dim.*. The bass staff contains notes with stems and beams, including a half note with a sharp sign. There is a bracketed section on the right side of the system.

Handwritten musical notation for the second system. It features a treble clef staff with a circled note and a bass clef staff with notes. The text *Pausard.* is written in the middle of the system. There are also some handwritten notes and symbols on the right side of the system.

Handwritten musical notation for the third system. It shows a treble clef staff with notes and a bass clef staff with notes. The text *sempre P* is written in the middle of the system. There is a double bar line at the end of the system.

IX

Handwritten musical notation for system 1. It features a grand staff with treble and bass clefs. The left hand has a forte (*f*) dynamic and a fermata. The right hand has a piano-piano (*pp*) dynamic and a series of chords with a "ga" marking above them. There are various accidentals and articulation marks.

Handwritten musical notation for system 2. It shows a grand staff with treble and bass clefs. The left hand has dynamics ranging from piano (*p*) to piano-piano (*pp*). The right hand has a piano-piano (*pp*) dynamic and a "ga" marking. There are various accidentals and articulation marks.

Handwritten musical notation for system 3. It shows a grand staff with treble and bass clefs. The left hand has dynamics ranging from piano (*p*) to piano-piano (*pp*). The right hand has a piano (*p*) dynamic and a fish-like symbol. There are various accidentals and articulation marks.

Handwritten musical notation for system 4. It shows a grand staff with treble and bass clefs. The left hand has a piano-piano (*pp*) dynamic and a "ga" marking. The right hand has a piano (*p*) dynamic and a "ga" marking. The notation ends with "etc." and a dashed line.

Handwritten musical notation on a grand staff. The upper staff contains a melodic line with notes and accidentals. The lower staff contains a highly scribbled-out accompaniment. The dynamic marking *pp* is written above the lower staff. The tempo marking *♩ INVARIABLE* is written below the lower staff.

Handwritten musical notation on a grand staff. The upper staff contains a melodic line with notes and accidentals, including the word *poco* and a dash. The lower staff contains a highly scribbled-out accompaniment. The tempo marking *sempre ♩ INV.* is written below the lower staff.

Handwritten musical notation on a grand staff. The upper staff contains a melodic line with notes and accidentals, including the words *poco*, *etc*, and *cu*. The lower staff contains a highly scribbled-out accompaniment.

Handwritten musical notation on a grand staff. The upper staff contains a melodic line with notes and accidentals, including the word *do* and a dash. The lower staff contains a highly scribbled-out accompaniment. The tempo marking *♩ INV. sempre* is written below the lower staff.

Handwritten musical notation on a grand staff. The upper staff contains a melodic line with notes and accidentals, including the word *to*. The lower staff contains a highly scribbled-out accompaniment. The tempo marking *sempre ♩ INV.* is written below the lower staff.

6/8

*f*

*pp*

*f dim.*

pa --

15a --

pa --

*dim.*

*dim.*

*dim.*

(2000)

*pp*

*M dim.*

pa --

15a --

pa --

*dim.*

*dim.*

*dim.*

(2000)

*pp*

*P dim.*

pa --

15a --

*dim.*

*dim.*

*Sub. ff*



Handwritten musical score for the first system. It consists of two staves. The upper staff is in treble clef and contains several notes and rests. The lower staff is in bass clef and contains notes and rests. Above the upper staff, there are several vertical lines of notes, possibly representing a guitar or piano accompaniment. The lyrics "roco a roco - dim" are written below the notes.

Handwritten musical score for the second system. It consists of two staves. The upper staff is in treble clef and contains several notes and rests. The lower staff is in bass clef and contains notes and rests. Above the upper staff, there are several vertical lines of notes. The lyrics "roco - a - roco" are written below the notes.

Handwritten musical score for the third system. It consists of two staves. The upper staff is in treble clef and contains several notes and rests. The lower staff is in bass clef and contains notes and rests. Above the upper staff, there are several vertical lines of notes. The lyrics "ces - - - ceu - - - do - - MOL - TO" are written below the notes.

Handwritten musical score for the fourth system. It consists of two staves. The upper staff is in treble clef and contains several notes and rests. The lower staff is in bass clef and contains notes and rests. Above the upper staff, there are several vertical lines of notes. The lyrics "sa - - - m" are written below the notes.





Handwritten musical score for the first system. It consists of two staves. The upper staff has a treble clef and contains notes with accidentals (flats and naturals) and a slur. Above the staff, there are handwritten annotations: "8a" with a dashed line and arrow, and "b" with a slur over notes. The lower staff has a bass clef and contains notes with accidentals. Dynamic markings include "pp" (pianissimo) and "P" (piano). A "Pdim." (piano diminuendo) marking is present with a downward curve. A "u" (unaccompanied) marking is written near the end of the lower staff.

Handwritten musical score for the second system. It consists of two staves. The upper staff has a treble clef and contains a sustained chord of three notes. The lower staff has a bass clef and contains a sustained chord of three notes. A dynamic marking "P" (piano) is written between the staves.

Handwritten musical score for the third system. It consists of two staves. The upper staff has a treble clef and contains a series of notes with various accidentals (sharps, flats, naturals) and a slur. Above the staff, there are handwritten annotations: "8a" with a dashed line and arrow, and "g" with a slur over notes. The lower staff has a treble clef and contains a melodic line of eighth notes. A dynamic marking "sempre P" (sempre piano) is written at the beginning of the lower staff. Chordal accompaniment is indicated by symbols like "#d", "bd", "#o.", "b o.", and "#o" above the lower staff.

5/4 (PRESTO)

XII

8a

PP *sib.*

*Sib. f. dim.*

*ff dim. poco a poco - sivo -*

gliss. con Sard.

PP dim.

gliss. sim.

P dim.

(SENZA Sord.)

(senza)

f

gliss sim. con sard.

u dim.

P

P<sub>4</sub>

u

3

P

PP

u dim.

3

3/4

XIII

8a

(LOCO)

8a

2/4

XIV

3

3

3

3

3

3

3

3



Handwritten musical score for the first system. The top staff is in treble clef and the bottom staff is in bass clef. The music features complex rhythmic patterns, including triplets and sixteenth notes. Dynamic markings include *f* (forte) and *ff* (fortissimo). The key signature has one flat (B-flat).

Handwritten musical score for the second system. The top staff is in treble clef and the bottom staff is in bass clef. The music is marked *dolce* (softly). It includes a section labeled *Perc.* (Percussion) with a fish-like symbol. The music features a triplet in the top staff and a 5(4) fingering in the bottom staff. The key signature has one flat (B-flat).

Handwritten musical score for the third system. The top staff is in treble clef and the bottom staff is in bass clef. The music is marked *p* (piano). It features a triplet in the top staff and a triplet in the bottom staff. The key signature has one flat (B-flat).

Handwritten musical score for the fourth system. The top staff is in treble clef and the bottom staff is in bass clef. The music starts with a 7/8 time signature. A section is labeled *XV*. The music features a melodic line in the top staff and a bass line in the bottom staff. The key signature has one flat (B-flat). The piece ends with a fermata and the word *etc.*

Handwritten musical notation for the first system, featuring a grand staff with treble and bass clefs. The treble clef part has a sharp key signature and contains three chords. The bass clef part has a melodic line with a slur and the word "etc." written above it.

Handwritten musical notation for the second system, similar to the first. The treble clef part has a sharp key signature and contains three chords. The bass clef part has a melodic line with a slur and the word "etc." written above it.

Handwritten musical notation for the third system, featuring a grand staff with treble and bass clefs. The treble clef part has a sharp key signature and contains a melodic line with a slur and the word "etc." written above it. The bass clef part has a melodic line with a slur and the word "etc." written below it.

Handwritten musical notation for the fourth system, featuring a grand staff with treble and bass clefs. The treble clef part has a sharp key signature and contains a melodic line with a slur and the word "etc." written above it. The bass clef part has a melodic line with a slur and the word "etc." written below it.

Handwritten musical notation on a grand staff. The top staff has a treble clef and a key signature of one sharp (F#). It contains a long horizontal line with a circled 'b.' above it. The bottom staff has a bass clef and a key signature of one flat (Bb). It contains notes with 'etc.' and circled 'b.' annotations.

Handwritten musical notation on a grand staff. The top staff has a treble clef and a key signature of one sharp (F#). It contains notes with 'etc.' and circled '8a' annotations. The bottom staff has a bass clef and a key signature of one flat (Bb). It contains notes with 'etc.' and circled '8a' annotations.

Handwritten musical notation on a grand staff. The top staff has a treble clef and a key signature of one flat (Bb). It contains notes with 'etc.' and circled 'P' annotations. The bottom staff has a bass clef and a key signature of one flat (Bb). It contains notes with 'etc.' and circled 'P' annotations.

Mario  
 Alfagell  
 Op. 264  
 5-16 JUNIO  
 2012  
 11:00 a.m.

7/8 *8a*

XVII

3

(8a)

3

3-1

8a

3

8a

*pp*

IDA Y A T J U V ← → E IDA

*mientras crece*

*f* *ff*

8a

8a



*p* INMUTABLE *pp sub.*

*p* *m* *f*

*ff* *pp cresc.*

*p cresc.* *m cresc.*

Handwritten musical notation on two staves. The top staff is in treble clef with a key signature of one flat (B-flat) and a common time signature. It features a melodic line with slurs and accents, and a dynamic marking of *f* (forte). The bottom staff is in bass clef with a key signature of one flat and a common time signature, featuring a bass line with a dynamic marking of *p* (piano). A handwritten number "-22-" is written above the top staff.

Handwritten musical notation on two staves. The top staff is in treble clef with a key signature of one flat and a common time signature, featuring a melodic line with slurs. The bottom staff is in bass clef with a key signature of one flat and a common time signature, featuring a bass line with slurs and a dynamic marking of *f*.

Handwritten musical notation on two staves. The top staff is in treble clef with a key signature of one flat and a common time signature, featuring a melodic line with slurs and a dynamic marking of *p*. The bottom staff is in bass clef with a key signature of one flat and a common time signature, featuring a bass line with a dynamic marking of *Sil. f* (silence then forte). Handwritten lyrics "sa-tin" are written above the top staff.

Handwritten musical notation on two staves. The top staff is in treble clef with a key signature of one flat and a common time signature, featuring a melodic line with slurs and a dynamic marking of *f*. The bottom staff is in bass clef with a key signature of one flat and a common time signature, featuring a bass line with slurs and a dynamic marking of *f*. Handwritten lyrics "tun tun tun" are written above the top staff. A fish symbol is drawn in the middle of the bottom staff. The text "PP INMUTABLE" and "con Sard." are written below the bottom staff.



$\begin{matrix} \text{se.} & \text{se.} \\ \text{bb} & \text{bb} \end{matrix}$

$\begin{matrix} \text{etc.} & \text{sempre } \underline{\text{pp}} \text{ in } \underline{\text{mvt.}} \end{matrix}$

*tranquilo*

$\text{XVII}$

$\text{P con SORD. ?}$

*etc.*

*sempre P*

*P sempre*

Handwritten musical notation on a grand staff. The right hand part contains notes with accidentals (sharps and naturals) and is followed by "etc.". The left hand part contains notes with accidentals and a fermata-like symbol.

Handwritten musical notation on a grand staff. The right hand part has notes with accidentals and is circled. The left hand part has notes with accidentals and the instruction "rampre P".

Handwritten musical notation on a grand staff. The right hand part has notes with accidentals and is circled. The left hand part has notes with accidentals and the word "etc.".

Handwritten musical notation on a grand staff. The right hand part has notes with accidentals and is circled. The left hand part has notes with accidentals and the instruction "P rampre".

Handwritten musical notation for the first system. It consists of two staves. The upper staff has a treble clef and contains several notes with dotted lines, some of which are circled. The lower staff has a bass clef and contains notes with dotted lines, also some circled. The text "etc." is written between the staves, followed by a dashed line. Below the dashed line, the text "sempre P" is written.

Handwritten musical notation for the second system. It consists of two staves. The upper staff has a treble clef and contains notes with dotted lines, some circled. The lower staff has a bass clef and contains notes with dotted lines, some circled. The text "etc." is written between the staves, followed by a dashed line.

Handwritten musical notation for the third system. It consists of two staves. The upper staff has a treble clef and contains notes with dotted lines, some circled. The lower staff has a bass clef and contains notes with dotted lines, some circled. The text "etc." is written between the staves, followed by a dashed line. At the end of the system, there is a double bar line. Below the double bar line, the text "P sempre" is written.

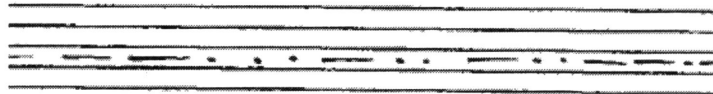
## Pasiūlymai dėl **Mario Alfaguell** muzikos atlikimo:

1. Erdvinis žymėjimas turi būti vykdomas sekančiai ( šiame kontekste erdvinis žymėjimas apima grafinio žymėjimo formą, dydį ir vietą`. Jei yra pateikiami du panašūs žymėjimai, bet vienas ilgesnis negu kitas, tai kompozicijos atlikimą):
  - a. turetų įtakoti Garso trukmė yra proporcinga grafinio žymėjimo ilgiui.
  - b. Ilgos linijos žymi ilgesnius skambėjimus.
  - c. Trumpos linijos reiškia trumpesnius skambėjimus.
  - d. Tušti tarpai žymi pertrauką.
2. Taškuotos linijos arba taškai-linijos reiškia prieš tai buvusio garso konteksto tęstinumą.
3. Aukščiau pažymėti apskritime - reiškia tų skambėjimų improvizaciją, specifinį laiko tarpą. Aukščių tvarka gali būti tokia , kaip pažymėta arba kitokia, pagal atlikėjo sprendimą.
4. Banguotos linijos rodo skirtingų aukščių kryptį ir elgesį.
5. Netaisyklingos linijos siūlo aleatorinę Improvizaciją.
6. Kiti muzikiniai žymėjimai turi vienodą reikšmę su kitais tradiciniais frazės žymėjimais.

Asmeninė ir kūrybinė grafinio žymėjimo interpretacija yra sveikintina. Atlikėjas gali tapti kūrinio bendraautoriumi – kompozitoriumi, interpretuojant partitūrą skirtingu būdu. Šis paaiškinimas gali būti suprastas tik kaip rekomendacija , ir neskirta riboti atlikėjo vaizduotės.

Suggestions for the performance of the music of Mario Alfagüell:

1. The spatial notation<sup>1</sup> must be respected as follow:
  - a. The duration of the sound is proportional to the size of the graphic notation.
  - b. Long lines produce longer sonorities.
  - c. Short lines produce shorter sonorities.
  - d. Empty spaces represent rests.
2. Dotted lines or dots-lines imply the continuation of the previous sound context.



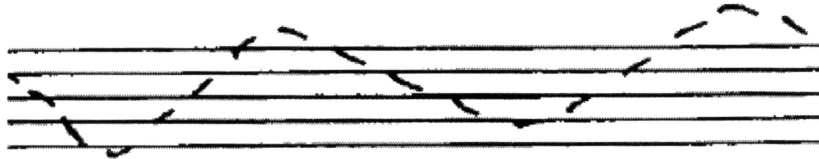
3. Pitches enclosed inside a circle represent the improvisation of those sonorities for a specific amount of time. The order of pitches can be respected or they can also be varied according to the judgment of the performer.



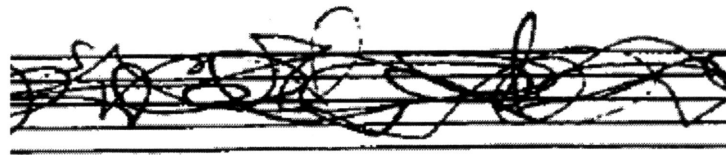
---

<sup>1</sup> In this context “spatial notation” is referred to the shape, size and position of the graphic notation. If two similar notations are presented twice, but one is longer than the other, that should impact the performance of the composition.

4. Waved lines indicate the direction and behavior of different heights.



5. Irregular lines suggest aleatoric improvisation.



6. Other musical markings has an equal meaning to the traditional phrase markings.

Personal and creative interpretation of the graphic notation is welcome. The performer can become a co-composer of the work by interpreting the score in a different way. This explanation can be understood as a reference only and it is not intended to limit the imagination of the performer.